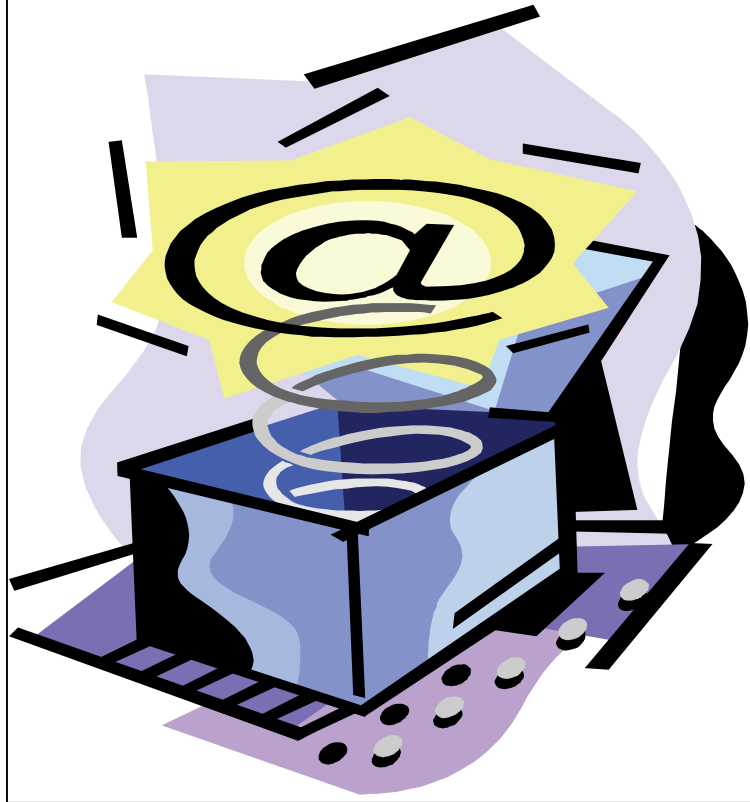


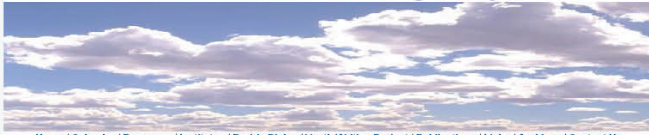
Prairie Lands Writing Project



Rejuvenating our Presence on the Web

© <http://www.missouriwestern.edu/plwp>

Prairie Lands Writing Project



[Home](#) | [Calendar](#) | [Programs](#) | [Institutes](#) | [Prairie Dialog](#) | [Youth Writing Project](#) | [Publications](#) | [Links](#) | [Archives](#) | [Contact Us](#)

Our web design team is working on a brand new web site, which will debut on August 27.
Thanks for your patience.

Welcome to PLWP Online

[Fall 2007 Course Offerings \(PDF Document\)](#)

[PLWP Deadlines and Deadlines \(PDF Document\)](#)

[PLWP 20 Years, 20 Moments/TC Database Update \(Word Document\)](#)

[2008 Write to Learn Proposal Information \(Word Document\)](#)

[Graduate Certificate in the Teaching of Writing](#)

A **National Writing Project** site, Prairie Lands Writing Project offers programs throughout northwest Missouri:

- Improving student literacy skills, especially reading and writing
- Providing **professional development** for teachers, grades K-16
- Expanding the professional roles of teachers
- Operating on the National Writing Project's teachers teaching teachers model:
 - Every summer, successful writing teachers attend Prairie Lands' **Invitational Institute** at Missouri Western and become certified NWP Teacher Consultants.
 - Throughout the year, Prairie Lands' Teacher Consultants provide professional development **programs** to improve the literacy skills of the area's students.

Eder Hall 201 | Missouri Western State University | St. Joseph, MO 64507 | Jane Frick, Site Director | Telephone: 816-271-4315 | Fax: 816-271-4166
Last Updated August 7, 2007 by Mark Henderson, Web Manager.

PLWP HOMEPAGE BEFORE

This is a "Before" shot of the PLWP Homepage — people typically either loved or hated the cloudy skies graphic, but there was usually no in-between feeling about it. There are also no graphics to break up all the text.

There *are* lots of places to go from here, but that was part of the problem. If you visited this homepage where would you go? Perhaps into yonder skies?

PLWP

Prairie Lands Writing Project
Jane Frick, Site Director
Eder Hall 201
Missouri Western State University
St. Joseph, MO 64507
Phone: 816-271-4315
Fax: 816-271-4166

Welcome to PLWP Online

Prairie Lands Writing Project (PLWP) celebrates its twentieth year this fall as northern Missouri's only **National Writing Project (NWP)** affiliate. As a local site within the NWP professional development network, we work with teachers of writing at all grade levels, primary through university, and in all subjects. During the calendar year ending August 31, 2007, PLWP conducted 66 programs for 4,377 teachers and 535 youth across Missouri. Our goals: improving student writing and learning, providing professional development, and expanding the professional roles of teachers.

In addition to federal grant funds distributed through the NWP network, PLWP is jointly supported by Missouri Western State University and the St. Joseph School District.

Upcoming Events

October 29 - Pre-register for PLWP's
January 15 [Spring 2008 Graduate Courses](#)

November 3 [TechKnowPlace Go Online](#)

November 14-17 [NWP/NCTE Annual Meetings in New York City](#)

[Event Calendar](#) [Sign Up](#) [Declarer: PDF](#)

Prairie Lands Selected for NWP Research Project:
Four-year study will evaluate teacher professional development and student performance in writing. [News Release](#)

January 15, 2008 Invitational Institute Application Deadline Set:
The invitational institute is the cornerstone of the NWP's teachers-teaching-teachers professional development model.
[2008 Invitational Meyer](#)
[How to Apply](#)
[Resume Format](#)
[2007 Participant Quote](#)

PLWP's Twentieth Anniversary Celebration Retrospective
[Retrospective](#)

When Writing Teachers Write VI Retrospective
[Retrospective](#)

Home Contact Us Site Map
©2007 Prairie Lands Writing Project

NWP MWPN St. Joseph School District **WESTERN**

Google D I S K Search

PLWP HOMEPAGE AFTER

This is an "AFTER" shot of the PLWP Homepage — we kept the blue and white from our blue skies, but we framed the info, added a tabbed menu for the top of the page, tried to break up the text with space, graphics and photos, and incorporated an acknowledgement of our affiliations.

There are lots of places to go from here too, but hopefully visitors have a better sense of direction here.



PLWP LOGO BEFORE

This is a "Before" shot of the PLWP Logo. The typewriter with the wheat growing out of it particularly bothered our student web designer, Mark Henderson. In his mind, it was an anachronism to have on a website. Oh, and what do you know, there are those blue skies again.



PLWP HOMEPAGE AFTER

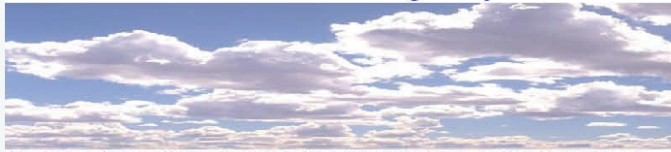
This is an "AFTER" shot of the PLWP Logo. It obviously takes its cue from the NWP Logo as well as our state network's the Missouri Writing Projects Network (MWPN) Logo, but for Mark that was the point. He thought it clearly and cleanly gave us a more contemporary identity and emphasized our relationships with the various levels of the overarching organization.



PLWP ANNIVERSARY LOGO

This is the logo Mark designed for our 20th Anniversary celebration earlier this fall. We wanted something besides the regular logo to mark this milestone. If you visit the site (at least until the end of the year) you will be able to see it prominently displayed in a couple of places there.

Prairie Lands Writing Project



Home | Calendar | Programs | Institutes | Prairie Dialog | Youth Writing Project | Publications | Links | Archives | Contact Us

Event Calendar

June 2007

Sunday	Monday	Tuesday	Wednesday	Thursday	Friday	Saturday
					1	2
3	4 Memorial Day Campus Closed	5 Writing Camps Begin Advanced Institute Meets	6 Writing Camps Advanced Institute Meets	7 Writing Camps Advanced Institute Meets	8 Writing Camps	9
10	11 Writing Camps Digital Storytelling Institute	12 Writing Camps Digital Storytelling Institute	13 Writing Camps Digital Storytelling Institute	14 Writing Camps Digital Storytelling Institute	15 Writing Camps Digital Storytelling Institute	16
17	18 Writing Camps	19 Writing Camps	20 Writing Camps	21 Writing Camps	22	23
24	25 Writing Camps	26 Writing Camps Advanced Institute Meets	27 Writing Camps Advanced Institute Meets	28 Writing Camps End Advanced Institute Meets	29	30

Eder Hall 2011 | Missouri Western State University | St. Joseph, MO 64507 | Jane Frick, Site Director | Telephone: 816-271-4315 | Fax: 816-271-4166
Last Updated May 3, 2007 by Mark Henderson, Web Manager.

PLWP CALENDAR PAGE - BEFORE

This is a "Before" shot of the PLWP Calendar Page. Visitors could see what events were scheduled, but if they didn't already know what the events were then it wasn't really very useful to them.

2007-08 Deadlines and Dates

- W 10/29 - T 1/15/2008** Pre-registration for Spring 2008 PLWP Graduate Courses. Pre-register for **ENG/EDU 512 Teaching Writing with Technology** (Tuesday, 8:30-9:30 / 1/15-2/9/2008) and for **ENG/EDU 516** (Saturday for Adolescents) (Thursday, 8:30-9:30 / 2/15-2/22/2008). Contact: plwp@missouriwestern.edu for classroom teachers registering through Prairie Lands Writing Project. plwp@missouriwestern.edu for non-PLWP.
- W 10/29** **Technology/Classroom Use Online** "The eLearning" Best Practices" Conference. This conference will focus on how to use a particular technology tool to improve learning. Have been developed by PLWP Teacher Consultants (TCs) as a part of PLWP's participation in the NWP's national Good Sites Technology Initiative, 2006-present. The TCs who created the sites are available to lead workshops or provide consultations at area schools for teachers wishing to implement the Technology. For more information, contact plwp@missouriwestern.edu, PLWP professional development director and Technology/Classroom Use coordinator.
- T 11/1** Graduate Certificate in the Teaching of Writing portfolio applications due. plwp@missouriwestern.edu for information about the Certificate program and the graduate application process.
- W 11/14** **NERPDC Middle School Literacy Academy II** Regional meeting II at Truman State - Kirksville, 8:30 - 3:30. Contact: plwp@missouriwestern.edu, Academy Coordinator or PLWP TC facilitators: plwp@missouriwestern.edu, plwp@missouriwestern.edu, plwp@missouriwestern.edu.
- W 11/14 - S 11/17** **NWP/NCTE** annual meeting in New York. Good sites for NWP program details and guidelines for NCTE program details. Prairie Lands TCs attending and/or presenting at this year's annual NWP meeting include Jane Frick, Clinical Instructor, Heidi Mick, Rebecca Dickling, Valerie Stokes, and Tom Penkavics.
- T 11/19** **NERPDC Middle School Literacy Academy I** Regional meeting II at Truman State - Kirksville, 8:30 - 3:30. Contact: plwp@missouriwestern.edu, NWP Academy Coordinator or TC facilitators: plwp@missouriwestern.edu, plwp@missouriwestern.edu.
- W 11/20** **Prairie Lands Advisory Board Meeting**, 5 - 8 pm, Eder Union, 222/223. Every Prairie Lands alum is invited to the dinner meeting and strategic planning session, and RSVP to plwp@missouriwestern.edu by Monday, November 19.
- W 12/12** **PLWP** program planning at Missouri Western, 8:30 am - 3:30 pm. Clinical instructor and Terri Malvey, PLWP program director and coordinator, respectively, must attend the PLWP office in Eder Hall 223.
- F 12/14** **NERPDC Middle School Literacy Academy I** Regional meeting III at Missouri Western, Eder Union 223, 8:30 - 3:30. Contact: plwp@missouriwestern.edu, NWP Academy Coordinator or PLWP TC facilitators: plwp@missouriwestern.edu, plwp@missouriwestern.edu, plwp@missouriwestern.edu.
- T 12/18** **St. Joseph Area Library Council** meets at 4 pm at plwp@missouriwestern.edu (weekend, 224 N. 40th Street, Agate Home). Holiday get-together and discussion of annual Children's Author Visit, March 12-13. This year's visit will be America's "Middle King" Mike Thaler, author of *Teacher from the Black Lagoon*. Thaler will visit an area school and present an evening lecture during his visit to the St. Joseph area.
- Th 12/20** **Missouri Writing Projects Network Directors Planning Meeting**, University of Missouri - Columbia, 10 am - 2 pm.
- S 1/5/2008** **Area School Author Visit Application Due**. The St. Joseph Area Library Council will select an area school for America's "Middle King" Mike Thaler, author of *Teacher from the Black Lagoon*. To visit on March 12 and 13.
- T 1/6/2008** **NERPDC Middle School Literacy Academy II** Regional meeting III at Missouri Western, Eder Union 223, 8:30 - 3:30. Contact: plwp@missouriwestern.edu, NWP Academy Coordinator or PLWP TC facilitators: plwp@missouriwestern.edu, plwp@missouriwestern.edu, plwp@missouriwestern.edu.
- W 1/9/2008** Annual Continued Funding Reauthorization grant due to NWP.
- T 1/15/2008 - T 5/09/2008** **EDU/ENG 512 Teaching Writing with Technology** meets 8:30-9:30 in Murphy Hall 119 at Missouri Western. This class will focus on what it

PLWP CALENDAR PAGE - AFTER

This is a partial "AFTER" shot of the PLWP Calendar Page. When we had our dinner and critiquing session in mid-summer, people gave quite a bit of input about the calendar. They wanted both the view of the overall month calendar, but they wanted to know a little about the scheduled events, too. This is what we came up with to satisfy both camps.

The screenshot shows the PLWP website interface. At the top, there are navigation tabs for Teachers, Administrators, Parents and Students, and Teacher Consultants. The main content area is titled "Teacher Consultant Kudos" and lists several individuals with their achievements. A left-hand menu strip contains various links, and a photo of a group of people is also visible.

Callout 1 (top right): We give you a link to a new resource Wiki where TCs and other interested parties can post reviews of helpful resources and or upload the resources themselves (from PD or workshop presentations the TCs

Callout 2 (middle right): We have now included the PLWP office's extensive library holdings of resources on the teaching of writing and reading for TCs to be able to conveniently access and reserve.

Callout 3 (bottom right): We have created a TC Database that gives the TC Alums' year(s) of participation and indicates what they are currently doing (if we know). If the TC gives their permission we also create an automatic link to their email address.

Callout 4 (bottom left): The photos in this menu strip on every page rotate every few minutes so we can highlight as many PLWP people and events as possible.

This is the new Teacher Consultants Page. People liked the idea of highlighting notable achievements and activities of TC Alums—they wanted to know what colleagues were up to, especially the people from their Institute year.

As with all the pages, the menu down the left hand side provides quick access to site areas that are most pertinent to this particular audience.

PLWP

Teachers Administrators Parents and Students Teacher Consultants

Prairie Lands Writing Project
For Administrators:

- Event Calendar
- School Inservices
- Middle School Literacy Academies

What can PLWP do for Administrators?

We can work with you and your school's professional development team to deliver a school-based inservice series based on your school's needs. To arrange for one or more of our National Writing Project school-based inservices, contact: [Jane Mick](#), site director (Phone: 816 371-4313) or [Hildi Mick](#), PLWP professional development director. Together, we will develop a memorandum of agreement outlining the literacy-based services conducted by our NWP-certified Teacher Consultants with your school's professional development needs and school improvement plans.

Book a Teacher Consultant to Assist with Using TechKnowFiles

Looking for ways to use technology effectively at your school? Browse our [TechKnowFiles](#)—online "Best Practice" teaching templates for educators who want to use a particular technology tool to improve learning. The templates were developed by PLWP Teacher Consultants (TCs) as a part of PLWP's participation in the NWP's national Good Sites Technology Initiative. 2007-present: The TCs who created the TechKnowFiles are available to lead workshops or provide consultations at area schools for teachers wishing to implement the technology tools. To arrange for a TC to come to your school, contact [Hildi Mick](#), (PLWP professional development director and TechKnowFile cadre coordinator.)

School Inservices

Since 2002, Prairie Lands Writing Project has successfully conducted inservices throughout north Missouri, including at schools in Stanberry, Chillicothe, Round City, Hamilton, Excelsior Springs, Savannah, Platte City, LeSueur, St Joseph, and Kansas City (Park Hill School District). In our programs, PLWP uses the National Writing Project's [model of professional development](#) with its thirty-year track record of improving students' writing and learning.

As a NWP site, we are an authorized provider of standard-aligned professional development and eligible for NCLB funding under:

- Title I, Part A** (Professional development and mentoring programs for Title I schools and teachers)
- Title II, Part A** (Professional development for helping teachers meet NCLB teacher requirements; Professional development in subject-matter knowledge, improving teaching skills, and assisting teachers to use Missouri's content area Grade Level Expectations and Missouri Assessment Program to improve student achievement)
- Title II, Part D** (Professional development focused on enhancing education through technology)

Our school-based professional development content can include, but is not limited to:

- Implementing Writers' Workshops and/or Readers' Workshops
- Preparing students for academic writing and critical reading across the disciplines
- Preparing students for writing on demand—district assessments, HSA, ACT, SAT, Advanced Placement, etc.
- Helping teachers design curriculum, assignments, and assessments to implement an effective reading and writing program
- Using assessment results to inform instruction
- Teaching resource revision and editing
- Using technology to teach writing
- Facilitating book study groups for teachers

Middle School Literacy Academies: A Missouri Writing Projects Network Initiative

[2007 NWSU Literacy Academies Slide Show](#)

[Literacy Academy Flyer](#)

Since June 2006, Prairie Lands Writing Project (PLWP) and the other four National Writing Project sites in Missouri have been under contract with the Missouri Department of Elementary and Secondary Education (DESE) to deliver Middle School Literacy Academies at each of the state's nine Regional Professional Development Centers (RPCDs). [Read more](#) about how the NWP sites in Missouri (NWP/N) developed the statewide inservice series with DESE's assessment division.

The academies are a multi-year project designed to improve students' performance on the Missouri Assessment Program (MAP), Missouri's "No Child Left Behind" accountability exam. The state's nine Regional Professional Development Centers host/spponsor the academies, with at least two National Writing Project Teacher Consultants (TCs) facilitating each academy. The TCs use a common format, delivery, set of instructional resources and assessment materials.

For 2007-2008, PLWP is delivering "Year One: Reading and Writing" and "Year Two: Teacher Inquiry" Middle School Literacy Academies at Missouri Western State University (in conjunction with the Northwest Regional Professional Development Center), and at Truman State University (in conjunction with the Northeast Regional Professional Development Center). [continued](#)

Home Contact FAQ Site Map
©2007 Prairie Lands Writing Project

affiliates: **NWP** **MWP/N** St. Joseph School District **WESTERN**

Search

PLWP

Teachers Administrators Parents and Students Teacher Consultants

Prairie Lands Writing Project
For Administrators:

- Event Calendar
- School Inservices
- Middle School Literacy Academies

Middle School Literacy Academies: A Missouri Writing Projects Network Initiative

[2007 NWSU Literacy Academies Slide Show](#)

[Literacy Academy Flyer](#)

Since June 2006, Prairie Lands Writing Project (PLWP) and the other four National Writing Project sites in Missouri have been under contract with the Missouri Department of Elementary and Secondary Education (DESE) to deliver Middle School Literacy Academies at each of the state's nine Regional Professional Development Centers (RPCDs). [Read more](#) about how the NWP sites in Missouri (NWP/N) developed the statewide inservice series with DESE's assessment division.

The academies are a multi-year project designed to improve students' performance on the Missouri Assessment Program (MAP), Missouri's "No Child Left Behind" accountability exam. The state's nine Regional Professional Development Centers host/spponsor the academies, with at least two National Writing Project Teacher Consultants (TCs) facilitating each academy. The TCs use a common format, delivery, set of instructional resources and assessment materials.

For 2007-2008, PLWP is delivering "Year One: Reading and Writing" and "Year Two: Teacher Inquiry" Middle School Literacy Academies at Missouri Western State University (in conjunction with the Northwest Regional Professional Development Center), and at Truman State University (in conjunction with the Northeast Regional Professional Development Center). [continued](#)

Home Contact FAQ Site Map
©2007 Prairie Lands Writing Project

affiliates: **NWP** **MWP/N** St. Joseph School District **WESTERN**

Search

On every page of our site, there is easy access to the Home Page, the Contact Page, the FAQs Page and the Site Map. We also included the Google Custom Search bar for the site and our affiliations at the bottom of each page.

In this School Inservices section we tried to provide answers and the kind of information we thought would be most helpful to administrators trying to get a quick idea of what PLWP can do for them.

This is the new Administrators Page. We talked about how administrators are busy people so we wanted to state up front how we could be of service to them and then provide quick links down the menu bar to some examples of those services and programs described in more detail on the page.

As with all the pages, the menu down the left hand side provides quick access to site areas that are most pertinent to this particular audience.